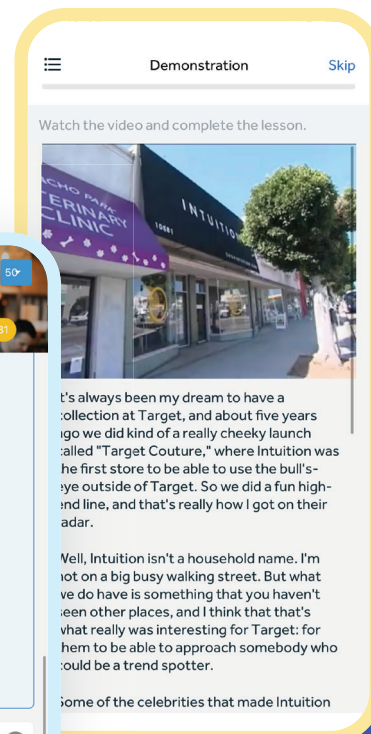


Language courses for retail and logistics

Rosetta Stone for Enterprise provides industry- and job-specific language training curriculum customer-facing, warehouse, and logistics teams in the retail industry.

Sample topics covered (CEFR B1 - C1)

- ✓ Warehousing and storage
- ✓ Inventory management
- ✓ Inside a factory
- ✓ Deliveries, transportation, and order management
- ✓ Documentation and procedures
- ✓ Purchasing and procurement
- ✓ In the fitting room
- ✓ Window shopping
- ✓ Luxury shopping
- ✓ Fashion brands in superstores
- ✓ Warranty and return policies
- ✓ Greeting customers
- ✓ Helping and dealing with customers
- ✓ Calming an angry customer
- ✓ Customer surveys and satisfaction

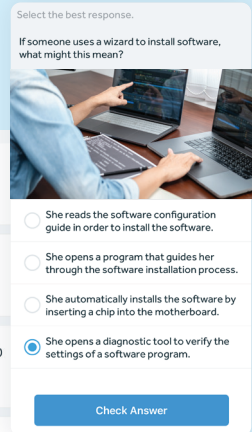
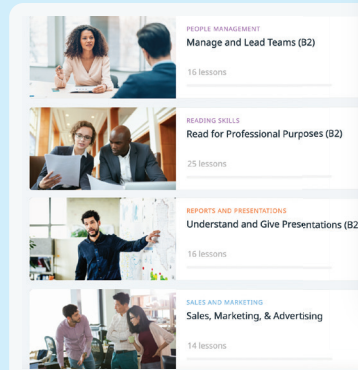


Empower every employee to build the language skills they need for work

Rosetta Stone for Enterprise offers an adaptable curriculum with more than 1,200 lessons that hone in on job-specific skills. Some cover business communication, while others are tailored to specific industries and business areas. Empower employees through lessons that align with their workplace needs and interests.



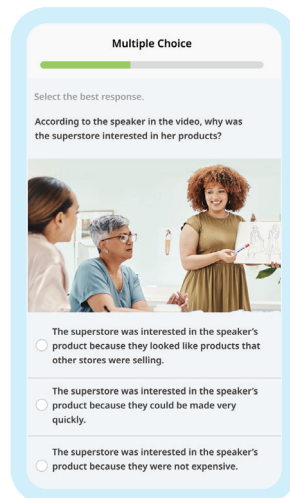
Add courses



Live Tutoring

Provide live learning opportunities

- ✓ Rosetta Stone tutors host 40,000 live tutoring sessions for learners around the world monthly.
- ✓ These real-time interactive sessions engage participants in a range of topics and skills to enhance spoken fluency, strengthen vocabulary, and provide cultural insights.



Accessible anytime,
anywhere

For more information, visit: www.rosettastone.com/business